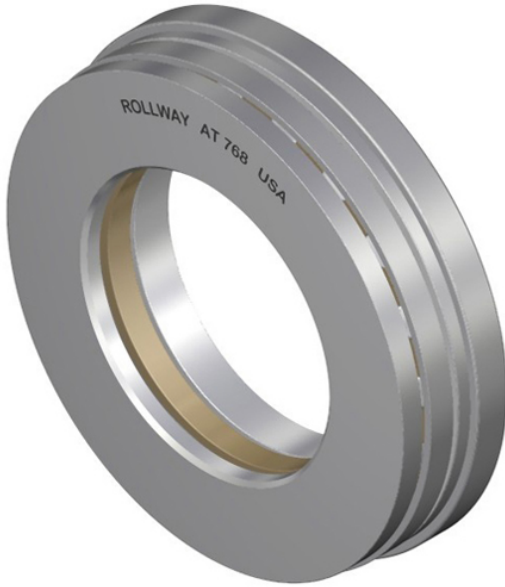




## Korean motorcyclist Co., Ltd



AT730 Bearing 2D drawings and 3D CAD models

### 3.0000 in x 6.3120 in x 1.8120 in Rollway AT730 Cylindrical Roller Thrust Bearings

Bearing No. AT730

d	3.0000 in
static load capacity:	268000 lbs
D	6.3120 in
cage material:	Machine Brass
B	1.8120 in
dynamic load capacity:	82200 lbs
thrust bearing type:	Self-Aligning
washer width:	0.3800 in
bearing material:	Case Carburized Steel
series:	600