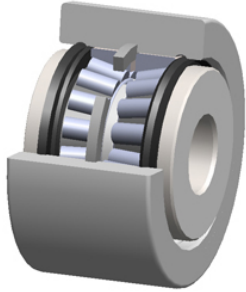




Korean motorcyclist Co., Ltd



PCI Procal Inc. PTRY-5.00 Bearings Crowned & Flat Yoke Rollers

Bearing No. PTRY-5.00

roller diameter:	5.0000 in
operating temperature range:	-30 ° F to 225 ° F
roller width:	2.7500 in
radial dynamic load capacity:	35870 lb
d	1.7500 in
radial static load capacity:	58400 lb
roller shape:	Flat
roller material:	Chrome Steel
bearing element:	Tapered Rollers
technical specifications:	Click here
closure type:	Sealed

PTRY-5.00 Bearing 2D drawings and 3D CAD models